

Bloomsbury Place

Brighton





We know just the place...



Close to the seafront, this four-bedroom duplex apartment offers plenty of living space, as well as four bedrooms, two bathrooms and two outside spaces. Ideal for someone looking for the space of a house within close proximity to the seafront.

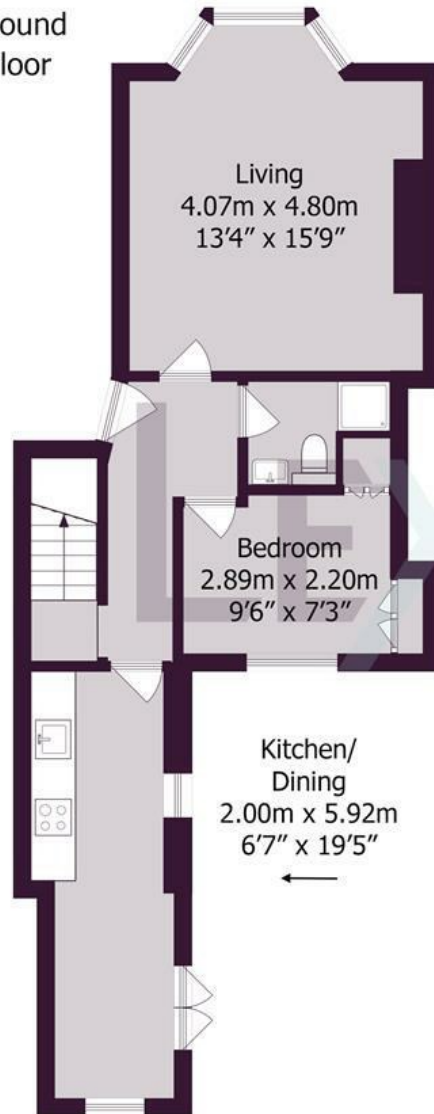
As you enter from the communal areas, the hallway allows access to all rooms. To the front of the building is the main living room with feature fireplace and high ceilings as well as a bay window with oblique sea view. Behind the reception room is one of the shower rooms, which is in good decorative condition, with one of the bedrooms located next to it. At the back of the building is the kitchen/dining room, with a range of modern kitchen units and double doors leading to the rear patio.

To the floor below are three further bedrooms, the master having a wall of fitted wardrobes and the third bedroom having double doors leading to the courtyard. There is a family bathroom, which also allows access to the front of the building should you require it. There is an excellent understair storage cupboard, which has plumbing facilities for a washing machine

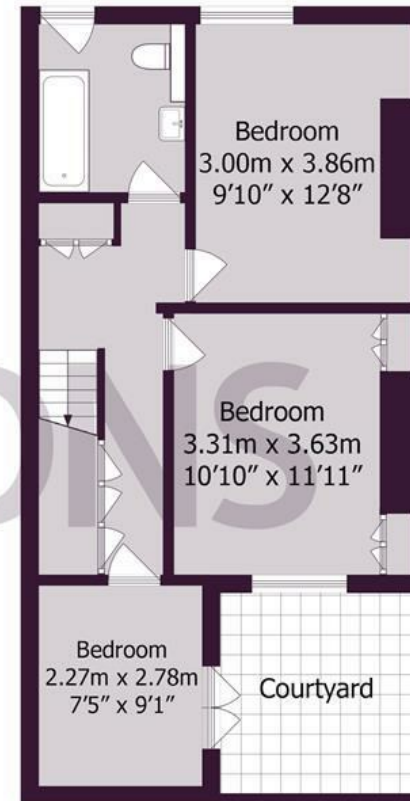
Bloomsbury Place is located between St George's Road and Marine Parade. The seafront is located just at the end of the road, with plenty of local amenities on St George's Road itself. Access in and out of Brighton is easy along the coast road and Brighton hospital is within walking distance.



Ground Floor



Lower Ground Floor



Approximate gross internal floor area 93.5 sq m/ 1006 sq ft

Whilst every care has been taken to ensure accuracy, dimensions are approximate and for illustrative purposes only.

Created by Property Photography UK for Lextons. All rights reserved.

Meet us here...
174 Church Road
Hove
BN3 2DJ

We aim to make our particulars both accurate and reliable. However they are not guaranteed; nor do they form part of an offer or contract. If you require clarification on any points then please contact us, especially if you're traveling some distance to view. Please note that appliances and heating systems have not been tested and therefore no warranties can be given as to their good working order.

